

## RHAPSODY FOR VIOLIN

William Neil

$\text{♩} = 40$  15 Solo Vln.  $8^{\text{va}}$   $fpp$  2

*moving ahead slowly*

**A** 20 A little faster  $\text{♩} = \text{c. } 132$   $sfp$   $ff$   $pp$  sub tone

25  $f$  ord.

28  $p < f$   $f$   $p$  2

33  $f$   $ff$   $ff < fff$  3  $ff$

37 2  $p < f$   $p$   $f$

43  $p < mf$   $p$   $mf$   $p$   $ff$

**B** 48 A little faster  $\text{♩} = 144$  3  $f$   $ff$   $p$

55 *ff* *f* *ff*

60 *pp* *ff* *p* *f*

**C**

65 *p* *f* *sfp* *f*

72 *ff* *p* *sfp* *f* *ff*

**D**

81 *ff* *p* *f*

86 *p* *sfp* *sfp* *sfp* *sfp* *f*

**E**

Much slower  $\text{♩} = 80$

slowing down

94 *sfp* *f* *ff*

Twice as fast  $\text{♩} = \text{♩}$

99 *p* *ff*

$\text{♩} = \text{♩}$   $\text{♩} = 52$



CLARINET in B $\flat$ 

155  $\text{♩} = 108$

*ff* *p* slowing down *fp* *f*

162 *p* *f* *sfp* *f*

167 **H** *ff*

171 5  $\text{♩} = \text{♩}$  **I** *p* *f* 3

181 *f* *p* *mf* 4

189 *p* *mf* 3

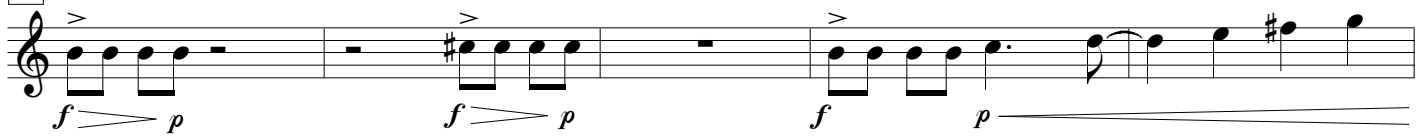
197 3 *tr* *mf* **J** 4 *f*

208 10 **K** *ff* *p*

222 *ff* 10 *Slower* 2 **L**  $\text{♩} = 108$  *Ob.* *f* *p* moving ahead

CLARINET in B $\flat$ 

236



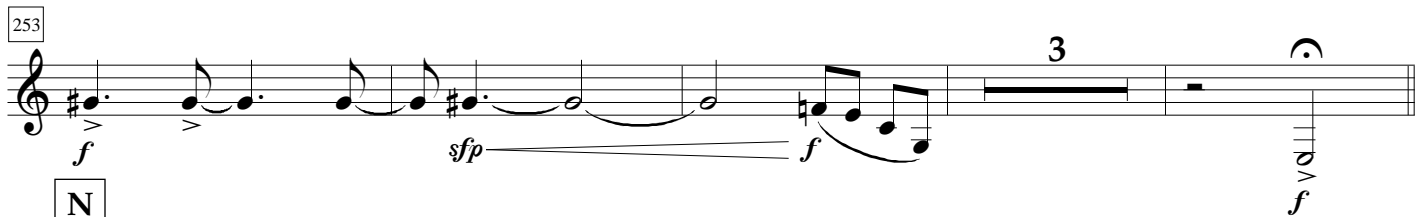
241



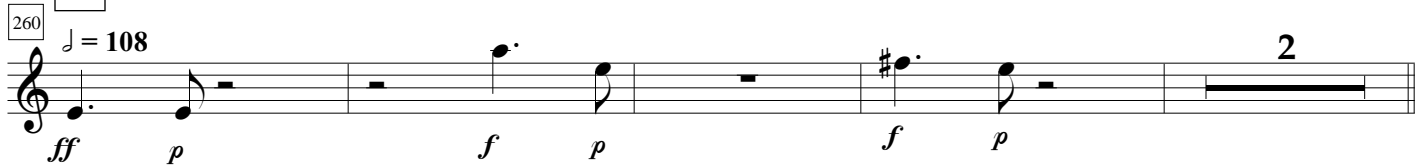
246



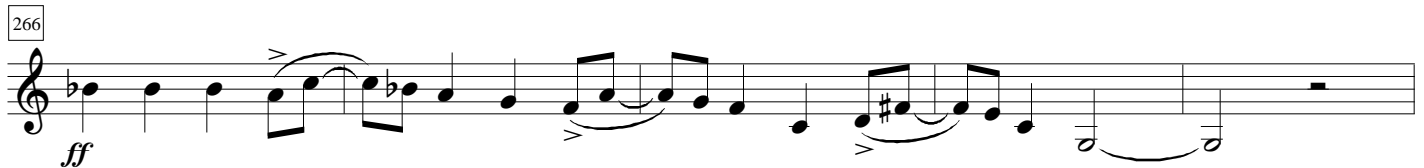
253



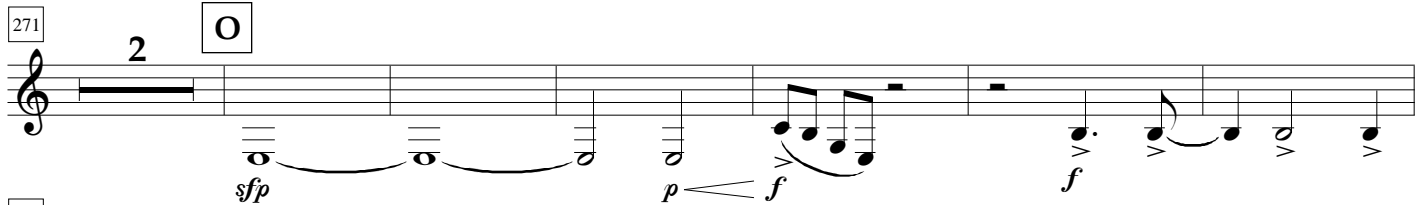
260



266



271



279



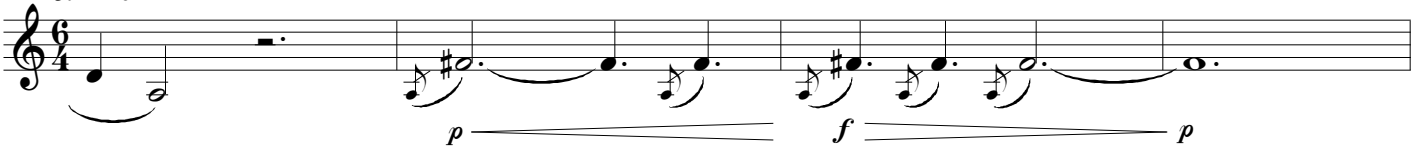
289



300



377

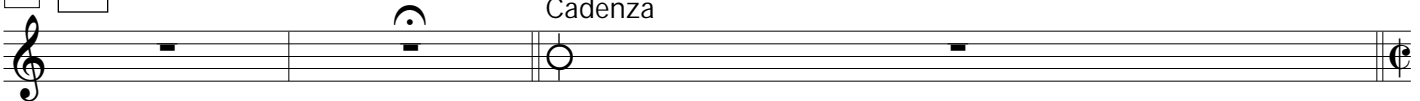
383  $\text{♩} = 40$ 

387



392

U



V

395  $\text{♩} = 108$ 

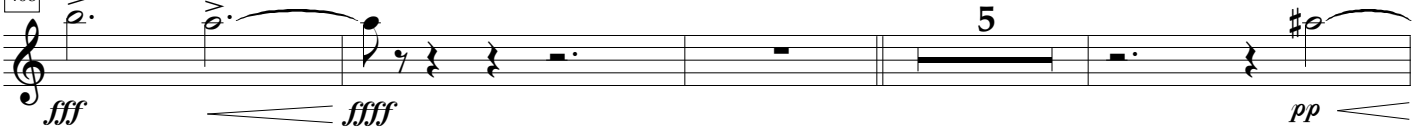
401



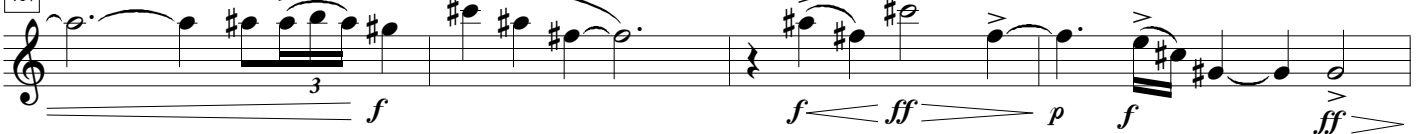
W

Slower  $\text{♩} = 48$ 

408



417



421



432

X



444 Slower  $\text{♩} = 40$ 